



precision
antibody™

For more information about this product or other Precision Antibody™ products, please visit www.precisionantibody.com or call (410) 884-4100.

A&G Pharmaceutical, Inc.
9130 Red Branch Road
Suite U
Columbia, MD 21045
tel 410 884 4100
fax 410 884 1607

www.precisionantibody.com

ANTIBODY DATASHEET

Anti-C19ORF5

Technical Data

Product #	AG10006
Product name	Anti-C19ORF5 Monoclonal Antibody
Host	Mouse
Immunogen	Recombinant C19ORF5 Protein
Available Size	100µg; contains Thimerosal (0.01%)

Applications

Western Blot	Yes suggested working concentration 0.1 µg/ml
ELISA	Yes
Immunoprecipitation	Yes

Handling Requirements

Storage	Store at -20°C. Avoid repeated freezing and thawing.
---------	--

Notes

Protein C19ORF5 is a homologue of microtubule-associated protein MAP1B that interacts with and colocalizes with leucine-rich PPR-motif containing protein (LRPPRC).

Working concentrations for your specific applications should be determined by the investigator. Appropriate concentrations will be affected by several factors, including secondary antibody affinity, antigen concentration, sensitivity of detection method, temperature, and length of incubations, etc.

References

This anti-C19ORF5 monoclonal antibody has been validated by WB as described in: Liu L, Vo A, Liu G, McKeehan W. Distinct Structural Domains within C19ORF5 Support Association with Stabilized Microtubules and Mitochondrial Aggregation and Genome Destruction. *Cancer Research* 65(10): 4191-4201, 2005.

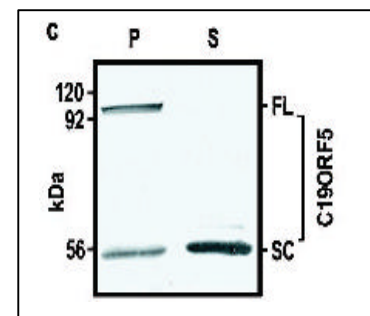
Pricing

Cost	\$ 350.00
Shipping & Handling	Fedex or UPS + \$10 dry ice fee

Western Blot

P= Pellet
S= Supernatant

Anti-C19ORF5 mAb against full-length (FL, 113 kDa) and short chain (SC, 56 kDa) C19ORF5 protein from cell lysate



innovative antibody products | custom antibody development